



Elite  
Nature Farms

“Cross the River to experience Nature’s Bounty”

# Elite Nature Farms

- ◀ Welcome to our premium farm plots for sale in E Thandrapadu, located just 10 minutes from the heart of Kurnool City.
- ◀ Our plots offer an excellent opportunity for those seeking to invest in a prime location that combines the benefits of city living with peace and tranquility of the countryside.
- ◀ Our premium plots are available in a range of sizes, ranging from 18 cents to 37 cents.
- ◀ Each plot is carefully designed to offer ample space for construction, Gardening and Farming
- ◀ Great Option if you are looking for a weekend getaway.



*We Build your Dream Home*



**Container House**

**Wooden House**



**Villa House**



**Gazibo**



# Elite Nature Farms

## LAYOUT PLAN

TOTAL SITE AREA - 6.13 AC

FARM PLOTS

PLOT NO	AREA
1	18.88 Cents
2	18.00 Cents
3	18.04 Cents
4	18.04 Cents
5	18.92 Cents
6	19.03 Cents
7	19.07 Cents
8	20.00 Cents
9	20.05 Cents
10	20.05 Cents
11	21.00 Cents
12	37.23 Cents
13	17.68 Cents
14	22.75 Cents
15	20.00 Cents
16	20.00 Cents
17	20.00 Cents
18	20.00 Cents
19	20.00 Cents
20	20.00 Cents
21	20.00 Cents
22	20.00 Cents
23	20.00 Cents
24	20.00 Cents
25	23.67 Cents



“Invest in our Farm Plots having exclusive inherent features to maximize your returns”



*Experience the Perfect Blend of Investment & Leisure*



## **PROJECT HIGHLIGHTS**

- Premium Size Plots
- Avenue, Exotic, Fruit Plantation
- 40 feet wide BT Roads
- 24 hours Security
- Compound wall with Entrance Gate
- 2 Years Maintenance & Drip to all Plantation
- Proper Electricity for Farm Plots.

# Elite Nature Farms



Scan for Google  
Location



## LOCATION HIGHLIGHTS

- 10 mins drive from Kurnool City Center
- 5 mins drive from N.H. 44 (Panchalingala X Roads)
- 13 kms. driveway from famous ALAMPUR JOGULAMBA TEMPLE



**Mango Tree**



**Sapota Tree**



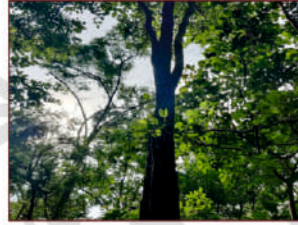
**Guava Tree**



**Custard Apple Tree**



**Coconut Tree**



**Red Sandal  
Wood Tree**



**Usiri Tree**

# Elite Nature Farms

**E THANDRAPADU, KURNOOL.**

Contact No: **+91 9966 9363 81**